



LIQUI MOLY
Car Care

Secure brilliant sales
for your shop



Wellness for four wheels. And for your business.

Vehicle owners generally have a special relationship with their four-wheeled buddy. Accompanying this is the need to maintain their vehicle in the best possible condition for as long as possible – in its appearance and in its engineering. Maintaining the best demands the best. Inside and out, the rule is that neglecting servicing and maintenance not only takes away the enjoyment when taking the car for a spin, but also affects the value of this “cherished” asset. LIQUI MOLY car care guarantees a lasting impression as well as tidy sales among your customers.



Contents

Paintwork care

Page 6

Convertible top /
engine compartment

Page 10

Glass

Page 11

Summer range &
rims/tires

Page 12

Winter range

Page 14

A/C system

Page 15

Upholstery/leather

Page 16

Interior/plastic

Page 17

Large containers for the
workshop

Page 18

Shelf configurations

Page 20

Sales displays

Page 22

On the following pages, we will show you what LIQUI MOLY has to offer in the car care range. You can find more products in our catalog, part no. 5603 or at www.liqui-moly.com



Brilliant quality

Enthusiasm alone is not enough to get the job done. You also need the highest quality to be able to best maintain all parts and materials on and in the car. Our products are so high performing that they make dealing with any type of dirt in just a few steps a breeze. This quality is also apparent in the wins and high rankings in product tests as well as repeatedly coming second in the category of care products in reader polls at major car magazines.



Comprehensive product range

Our full automotive chemicals product range includes, among other things, a comprehensive care line that perfectly covers virtually all applications on a vehicle. Whether for paint, chrome, glass, rubber, rims, tires, the convertible top, plastic, the engine, leather or the interior: Our car care series can be clearly presented in a manner that boosts sales. It excites your customers and ensures their lasting enjoyment of their vehicle.



User-friendly products

With our care products we always offer the perfect solution – be it for the casual owner or for the car enthusiast. An attractive design with an easily understandable color code, legible labels and illustrative before-and-after pictures make it easy to choose the right product and its application. A QR code also adds detailed information, application pictures, videos, safety data sheets and additional product tips.



Strong partner

Business is done between people. This has inspired us to view ourselves not only as a supplier, but as your long-term partner. In all that we do, your satisfaction is our top priority. Our bonus factors are speediness, personal service on-site and absolute customer orientation. This sets us apart from our competitors and hones our understanding of your needs. And those of your customers. Whenever and wherever you need us: Our extensive field service is always at your side.



Popular brand

With LIQUI MOLY, you offer you customers a brand that excites millions of people around the world. With our involvement in Formula 1, MotoGP, winter sports, handball and basketball, for example, but also thanks to our collaboration with famous influencers, we are represented throughout the year on all channels, thereby continuously increasing demand. The trust placed in our brand by the Haas F1 team in the pit on a daily basis proves that our care products are even highly regarded in the top tier.

EXTERIOR / PAINTWORK



Wax

Specially for new or rejuvenated paint finishes. Do not use on matt paints!

500 ml, PU 6, Part no. 23032



Shine Polish

Specifically for paint surfaces with slight signs of wear and tear or for the elimination of holograms. Do not use on matt paints!

500 ml, PU 6, Part no. 23031



Polish & Wax

Specifically for paint surfaces with slight and moderate signs of wear and tear. Do not use on matt paints!

500 ml, PU 6, Part no. 23030



Paint Restorer

Specifically for slightly to moderately weathered paint as well as for moderate to severe scratches and flash rust.

500 ml, PU 6, Part no. 23029



Scratch Remover

For heavily scratched and weathered paintwork.

100 ml, PU 6, Part no. 23028



Grinding Paste

For repairing deep scratches, orange peel, and extremely weathered paintwork.

250 ml, PU 6, Part no. 23027





Hand polishing sponge soft

For manual processing of all polishes and sealants.

2 Pieces, PU 6, Part no. 21781



Hand polishing sponge hard

For manual processing of all grinding polishes.

2 Pieces, PU 6, Part no. 21782



Paintwork Microfiber Cloth

For polishing out and removing polishing residues on paintwork.

1 Piece, PU 6, Part no. 21783

QUICK PAINTWORK CARE



Waterless Detailer

For smooth paintwork on cars, commercial vehicles, two-wheeled vehicles and boats. Can also be used on smooth plastic surfaces as well as steel and aluminum rims.

500 ml, PU 6, Part no. 23026



Polishing microfiber cloth

For wiping off care products and polishing residues as well as drying after washing the vehicle on all sensitive surfaces such as paintwork, Plexiglas, foiling, plastic, stainless steel or even sealed wood.

1 Piece, PU 6, Part no. 21892



SPECIALIST PAINTWORK CARE/CLEANER



Insect Remover

For removing insect residues on car windows, chrome parts, headlamps and painted surfaces.

500 ml, PU 6, Part no. 23008



Easy Clean

For cleaning a wide range of surfaces and materials such as paint, metal, chrome, and glass as well as aluminum rims covered with clear coat.

400 ml, PU 12, Part no. 23025



Tar Remover

For cleaning all types of tar-based contaminants from vehicles. Do not use on polycarbonate plastics or acrylic glass!

300 ml, PU 6, Part no. 23020



Chrome Polish

For all chrome parts on cars, commercial vehicles, motorbikes and bicycles.

250 ml, PU 6, Part no. 23002



Plastic Restorer Exterior

For all unpainted plastic parts on the vehicle exterior.

250 ml, PU 6, Part no. 23011



HAND WASHING



Wash & Wax

For cleaning and protecting all paint surfaces.

1 l, PU 6, Part no. 23007



Wash & Protect

For cleaning paint surfaces. Offers a wide range of applications thanks to its high material compatibility.

1 l, PU 6, Part no. 23009



Car Washing Sponge

For glass, paint and plastic.

1 Piece, PU 12, Part no. 1549



Insect Removal Sponge

For removing insects from glass, paint and plastic.

1 Piece, PU 12, Part no. 1548



Natural Car Cleaning Leather

Train-oil tanned, soft and extremely absorbent car and window leather. Dries without streaks on glass, chrome and paint.

1 Piece, PU 10, Part no. 1596



CONVERTIBLE TOP



Soft Top Cleaner

For all convertible soft tops made of fabric and plastic.

500 ml, PU 6, Part no. 23015



Fabric Care & Protect

For impregnating textile soft tops, awnings, tents, sunshades and much more. Also for products with a breathable membrane and suede leather.

400 ml, PU 6, Part no. 23016

ENGINE COMPARTMENT



Engine Compartment Cleaner

For cleaning engines and engine compartments.

400 ml, PU 12, Part no. 3326



Motor-Conserve

For motor vehicle engines and engine compartments.

400 ml, PU 6, Part no. 3327



GLASS/WINDSHIELD



Windshield Foam Cleaner

For internal and external cleaning of vehicle windows. Especially after window repairs. Also for all windows and headlights in the passenger car and commercial vehicle sector.

300 ml, PU 12, Part no. 23001



Silicone & Wax Remover

For preparing the substrate for paint and for removing silicone and wax residues after car washing.

250 ml, PU 6, Part no. 23013



Fix-clear Rain Repellent

For all vehicle windows made of glass.

100 ml, PU 6, Part no. 23014



Windshield Super-Concentrated Cleaner

For summer operation of all passenger and commercial vehicle windshield washer units.

50 ml, PU 40, Part no. 1517



SUMMER RANGE



Windshield Super-Cleaner Concentrated Cleaner

Application 1:100 dilute with water. 50 ml of concentrate gives 5 l of cleaning fluid. 250 ml of concentrate gives 25 l of cleaning fluid.

250 ml, PU 6,
Citrus, Part no. 1519
Cherry, Part no. 21706
Ocean, Part no. 21708



Windshield Cleaner citrus

Windshield cleaner concentrate is used diluted with water at the rate of 1:10. 1 l of concentrate produces 10 l of cleaning fluid.

1 l, PU 6, Part no. 1514



Windshield Cleaner

Creates clear vision in seconds.

3 l, PU 4,
Citrus, Part no. 21705
Cherry, Part no. 21707
Ocean, Part no. 21709



Windshield Super-Cleaner Concentrated Cleaner

Application 1:100 dilute with water. 50 ml of concentrate gives 5 l of cleaning fluid. 250 ml of concentrate gives 25 l of cleaning fluid.

50 ml, PU 40, Part no. 1517



Windshield Super-Cleaner Concentrated Cleaner

Application 1:100 dilute with water. 50 ml of concentrate gives 5 l of cleaning fluid. 250 ml of concentrate gives 25 l of cleaning fluid.

20 ml, PU 50, Part no. 22033



Rubber Care

Cares for and protects rubber parts on vehicles.

75 ml, PU 18, Part no. 21926
500 ml, PU 6, Part no. 23005



RIMS & TIRES



Rim Cleaner

Cleans all rim designs. With dirt indicator.

1 l, PU 6, Part no. 23017



Tire Shine

Maintains and protects tires in a single operation.

400 ml, PU 6, Part no. 23021



Example configuration for a Futura plastic rack.

Futura-Plastic-Rack

Part no. 9989



WINTER RANGE



Windshield Antifreeze Concentrate

Concentrate for mixing. Quickly provides a clear view.

1 l, PU 6, Part no. 21678
5 l, PU 4, Part no. 21757



Ready-to-use windshield antifreeze -20 °C

Concentrate for mixing. Quickly provides a clear view.

3 l, PU 4, Part no. 21677
5 l, PU 4, Part no. 21795



Windshield De-Icer

Quickly and gently removes ice and white frost from vehicle windows.

500 ml, PU 6, Part no. 8052



Rubber Care

Cares for and protects door rubber seals on vehicles.

75 ml, PU 18, Part no. 21926
500 ml, PU 6, Part no. 23005



Lock Care & De-Icer

Lubricates and treats door locks, door hinges and the mechanical parts of side mirrors. Keeps moving parts moving.

50 ml, PU 24, Part no. 21925



A/C SYSTEM



Air Freshener

For the vehicle interior.

Vanilla, PU 12, Part no. 21830
New Car, PU 12, Part no. 21831
Cherry, PU 12, Part no. 21832
Ocean, PU 12, Part no. 21833



Air Freshener Display

Contents: 12 air fresheners each with the fragrances Vanilla, Cherry, New Car and Ocean.

48 Pieces, Part no. 21834

Air Freshener Display

Contents: empty

1 Piece, Part no. 21939

Klima Refresh

Eliminates odors in the vehicle.
Cleans the air conditioning.

75 ml, PU 12, Part no. 21465



UPHOLSTERY & LEATHER



Fabric Foam Cleaner

Cleans thoroughly and gently.

300 ml, PU 12, Part no. 23006



Leather Care

For all leather or imitation leather surfaces in the automotive sector, leather suits and leather components in the home, for hobbies and at work.

250 ml, PU 6, Part no. 23012

INTERIOR



Interior Cleaner

For cleaning all surfaces in the vehicle interior.

500 ml, PU 6, Part no. 23010



Screen Cleaner

Cleans displays of smartphones, tablets, touchscreens, TV and PC screens etc. quickly and gently.

100 ml, PU 24, Part no. 21634



INTERIOR



Active Foam Cleaner

Multifunctional foam cleaner for the effective cleaning of smooth surfaces made of aluminum, stainless steel, plastic, glass, chrome, and rubber.

500 ml, PU 6, Part no. 21277



Microfiber Cloth

For the cleaning and care of a variety of surfaces.

1 Piece, PU 10, Part no. 1651

INTERIOR PLASTIC



Cockpit Spray

Cares for plastic parts, particularly in cockpits.

300 ml, PU 12,
Vanille, Part no. 23018
Citrus, Part no. 23019



Cockpit Shine

Makes plastic parts shine, particularly in cockpits.

200 ml, PU 12, Part no. 23000



Plastic Restorer

Cleans, maintains and protects all plastic parts in the vehicle interior and freshens up surfaces again.

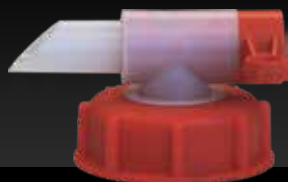
500 ml, PU 6, Part no. 23003



LARGE CONTAINERS FOR THE WORKSHOP

Part no.	Description	Content	PU
1653	Universal Cleaner	1 l	6
21670	Universal-Cleaner Extreme	10 l	1
21671	Universal-Cleaner Extreme	20 l	1
8198	Gloss Waxing Shampoo	10 l	1
8199	Gloss Waxing Shampoo	25 l	1
8194	Glass Cleaner	10 l	1
21674	Glass Cleaner	20 l	1
21737	Rim Cleaner	20 l	1
21672	Acid Rim Cleaner	10 l	1
21673	Acid Rim Cleaner	20 l	1
21386	Pro-Line Professional CV Cleaner	10 l	1
21723	Pro-Line Professional CV Cleaner	20 l	1
6928	Windshield Frost Guard Concentrate -60 °C	60 l	1
6929	Windshield Frost Guard Concentrate -60 °C	200 l	1
1976	Windshield Super-Concentrated Cleaner citrus	200 l	1

ACCESSORIES



Drain cock for canisters with thread DIN 61

For 20 – 25 l canisters with outer thread size DIN 61.

1 Piece, PU 1, Part no. 3378



Pump Spray Bottle

Fill the spray bottle with the intended chemicals. Do not exceed the maximum capacity of 0.9 l.

1 Piece, PU 1, Part no. 3316



Acid-resistant pump-spray bottle

For the application and atomization of chemicals of the Acid Rim Cleaner, Universal Cleaner, Universal Cleaner Extreme, Rapid Rust Solvent, Multi-Spray Plus 7, LM 40 Multi-Purpose Spray, Glass Cleaner, Gloss Waxing Shampoo, Fluorescent Leak Finder K and Leak Finder from LIQUI MOLY. Concentration 1:3 to 1:10. Capacity: 1.25 l.

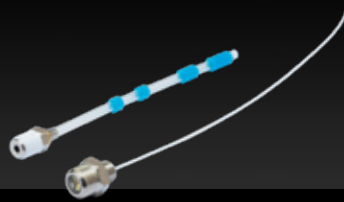
1 Piece, PU 1, Part no. 29032



Tornador Gun

To remove contamination on floor mats, upholstery and seats, stowage compartments, door hinges, etc.

1 Piece, PU 1, Part no. 29077



Tornador Gun spare hoses

Spare part kit consisting of rotary hose with reinforcement and inner hose part.

1 Piece, PU 1, Part no. 29080



Universal Cleaner

For the removal of industrial soiling such as ash, dust and soot on stone, concrete, tiles, ceramics and glass surfaces as well as for oils, greases and adhesive residues on a wide range of metal surfaces and of ink residue on printing presses.

1 l, PU 6, Part no. 1653



SHELF CONFIGURATIONS

Sample planograms as a configuration proposal for your sales space with a shelf width of 125 cm.

Proposal 1



Proposal 2



Proposal 3



SALES DISPLAYS

**Completely equipped
counter-top or shelf displays**



Screen Cleaner

100 ml, PU 24, Part no. 21634



Lock Care & De-Icer

50 ml, PU 24, Part no. 21925



Windshield Super-Concentrated Cleaner

50 ml, PU 40, Part no. 1517

**Freely configurable
secondary placements**



Display, folding

Part no. 9348



Air Freshener Display

PU 1, Part no. 21834



Air Freshener Display

PU 1, Part no. 21939



Example configuration for car care Futura plastic rack.

Futura-Plastic-Rack

Part no. 9989

Topper

Part no. 9966

Side sections

Part no. 5245



Example configuration for paintwork care Futura plastic rack.



Example configuration for winter products Futura plastic rack.

We will
create an
individual
configura-
tion to meet
your needs.



LIQUI MOLY GmbH
Jerg-Wieland-Strasse 4
89081 Ulm
GERMANY

Phone: +49 731 1420-0
Fax: +49 731 1420-75
E-mail: info@liqui-moly.com
www.liqui-moly.com

Technical support:
Phone: +49 731 1420-871
E-Mail: support@liqui-moly.com

No liability for misprints.
Subject to technical modifications.

Specifications, approvals and
recommendations correspond to the
status at the time of going to press.



facebook.com/liquimoly



instagram.com/liqui_moly_worldwide



LIQUIMOLYwebTV

With best regards

